

Associations céramiques et
Musées
au Royaume-Uni

Associations céramiques et Musées au Royaume-Uni

- Royaume-Uni
- **Craft Potters Association of Great Britain - Association des potiers artisans de Grande-Bretagne** : <https://www.craftpotters.com/>
- **European Route of Ceramics - Itinéraire européen de la céramique** : <https://www.europeanrouteofceramics.eu/about-us/>
- **Medieval Pottery Research Group - Groupe de recherche sur la poterie médiévale** : <https://medievalpottery.org.uk/>
- **The British Ceramic Confederation - Confédération britannique de la céramique** : <https://www.ceramfed.co.uk/>
- **The De Morgan Museum - Le musée De Morgan** : <https://www.demorgan.org.uk/>

Associations céramiques et Musées au Royaume-Uni

- The English Ceramic Circle - *Le cercle de la céramique anglaise (on y trouve la liste des musées dédiées à la céramiques et la liste des associations céramiques)* : <https://www.englishceramiccircle.org.uk/>
- <https://www.englishceramiccircle.org.uk/ceramic-organisations/>
- The French Porcelain Society, England - *Société anglaise de porcelaines françaises* : <https://www.thefrenchporcelainsociety.com/>
- The Northern Ceramic Society - *Société de la céramique du Nord* : <https://www.northernceramicsociety.org/>
- The Oriental Ceramic Society – *Société de céramiques orientales* : <https://www.orientalceramicsociety.org.uk/>
- The Society for Post-Medieval Archaeology - *Société pour l'archéologie post-médiévale* : <https://spma.org.uk/>
- The Transferware Collectors Club - *Club des collectionneurs de céramiques avec décors imprimés* : <https://www.transferwarecollectorsclub.org/>
- Victoria & Albert Museum. Collections online : <https://www.vam.ac.uk/collections?type=featured>

The English Ceramic Circle



The English
Ceramic Circle

[What's on](#)

[News](#)

[Membership](#)

[Videos](#)

[Donate](#)

[Grants](#)

[Archives](#)

[Publications](#) ▾

Registered Charity No. 1097063
[Contact](#)



The English Ceramic Circle is dedicated to the study of ceramics manufactured, decorated, or used in the British Isles.

The ECC offers these benefits to our members:

- free copies of the annual ECC journal, Newsletters and other ceramic volumes
- regular convivial meetings with talks on new research by ceramic experts
- broadening your ceramic knowledge, making new friends and meeting ceramic experts
- online access (with full text-search) to the ECC archives comprising around 700 papers
- handling sessions at museums/public collections and visits to private collections
- exclusive auction preview visits, including Bonhams and Woolley & Wallis

The English Ceramic Circle

What's On



ENGLISH CERAMIC CIRCLE ** EVENTS PROGRAMME 2023

The ECC runs three types of meetings:

Member's meetings - which are generally held in London on Saturdays - we aim to Zoom these and add the recordings onto the member's section of the ECC website. The venue is the Foundling Museum, 40, Brunswick Square, Bloomsbury, London WC1N 1AZ. These are open to members only.

Open Zoom meetings - which are available to members and non-members alike. These tend to be on the last Thursday of the month, and start at 6pm. The Zoom meetings do not happen every month, so there are gaps in the programme. The link is circulated about a week in advance.

Seminars - open to members and non-members who pay the attendance fee - with members receiving a discounted rate.

If you would like to receive invites to all meetings, the simplest way is to join the ECC. Alternatively, send your email address to the Membership Secretary, programme@englishceramiccircle.net

The English Ceramic Circle - Vidéos



Videos

The ECC is delighted to make the video recordings from meetings available to members to view at your leisure. Members will have received by email a password which you will need to enter to view the recording(s). If this is not the case please [Click Here](#) to contact the Membership Secretary. If you are not a member of the ECC but seek access to this broader set of videos, please join by visiting our 'Become A Member' tab.

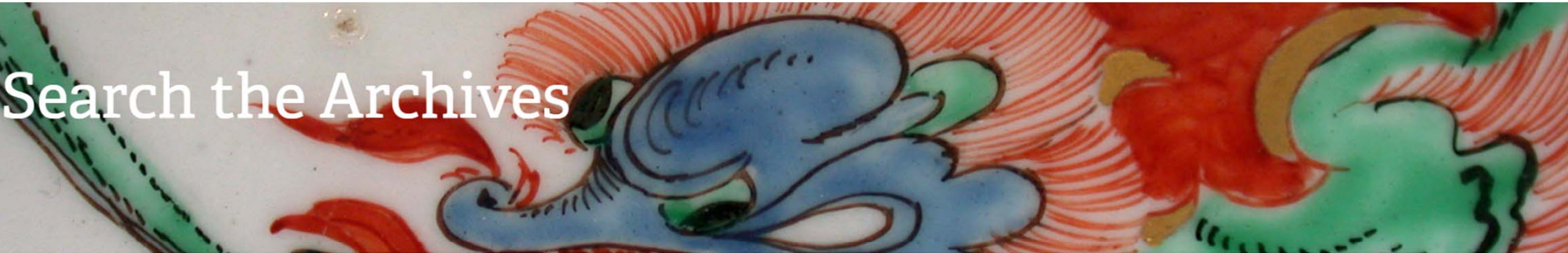
Additionally, we do have a couple of videos on our Home Page which are viewable by all.

Search

Reset

<https://www.englishceramiccircle.org.uk/videos/>

The English Ceramic Circle - Archives



[Click here](#) to go to the website that contains digitised versions of the ECC Journal, the Transactions of the English Ceramic Circle, first published in 1928. It contains over 650 individual papers which have been peer reviewed research by recognized experts in British ceramics. The most recent papers are not yet available online but will be added to each year by the next volume in the series.

Access to the website is gained by first registering with the site then buying a subscription. Before you register you can try a search using the search field on the right of the page to see what content exists on the subject that interests you. To register, firstly read the [instructions](#) and then click on the menu item at the top of the page. You only need to fill out the mandatory fields plus the postal address, and then select a paid subscription.

Members of the English Ceramic Circle pay a nominal £1.00 charge to access this website. Public access is available for nonmembers by purchasing a subscription for one month (£15.00), six months (£30.00), or one year (£50.00). Becoming a member of ECC also provides full individual access to the online service and costs £45.00 per annum or £39.00 by UK standing order. To renew membership [click here](#).

Viewing on a tablet or phone? Some of our PDF files are large and may take a while to load. If articles do not display properly we recommend downloading the PDF file. A link to do this appears above the article.

The English Ceramic Circle – Publications (Transactions), Newsletters et Bibliothèque

<https://www.englishceramiccircle.org.uk/journal/index.php/ECC> Transactions

English
Ceramic Circle



Transactions
Volume 28 2017

English
Ceramic Circle



Transactions
Volume 29 2018

This Page
contains the
recent
newsletters
issued to all
members:
[October 2020](#)

[March 2020](#)

[September 2019](#)

[March 2019](#)

[September 2021](#)

ibliothèque

<https://www.englishceramiccircle.org.uk/wp-content/uploads/2021/10/TOPPIN-A-Z-Oct-21.pdf>

The English Ceramic Circle - Liens

<https://www.englishceramiccircle.org.uk/ceramic-organisations/>

ms
lean Museum
Museum
on and Hove Museums
Museum
rt China Museum
Museum and Art Gallery
zwillian Museum, Cambridge
s Museum, Bedford
ne Museum, Bath
m of London Archaeology (MOLA)
m of London
m of Royal Worcester
al Museums Liverpool
al Museum Wales
al Museums Scotland
rw Chinaworks Museum
h Castle Museum and Art Gallery
lphia Museum of Art
es Museum & Art Gallery, Stoke-on-Trent
g Museum
rown Derby
a & Albert Museum
ood Museum
thur Museum, Garden and Library

Ceramic Societies

French Porcelain Society
American Ceramic Circle
Caughley Society
Derby Porcelain Society
Friends of Blue
Torquay Pottery
London Ceramic Circle
Northern Ceramic Society
Oxford Ceramics Group
Spode Society
Transferware Collectors Club
Tiles & Architectural Ceramics Society

The English Ceramic Circle – Photos des membres

<https://www.englishceramiccircle.org.uk/gallery/>



The English Ceramic Circle - Tarifs

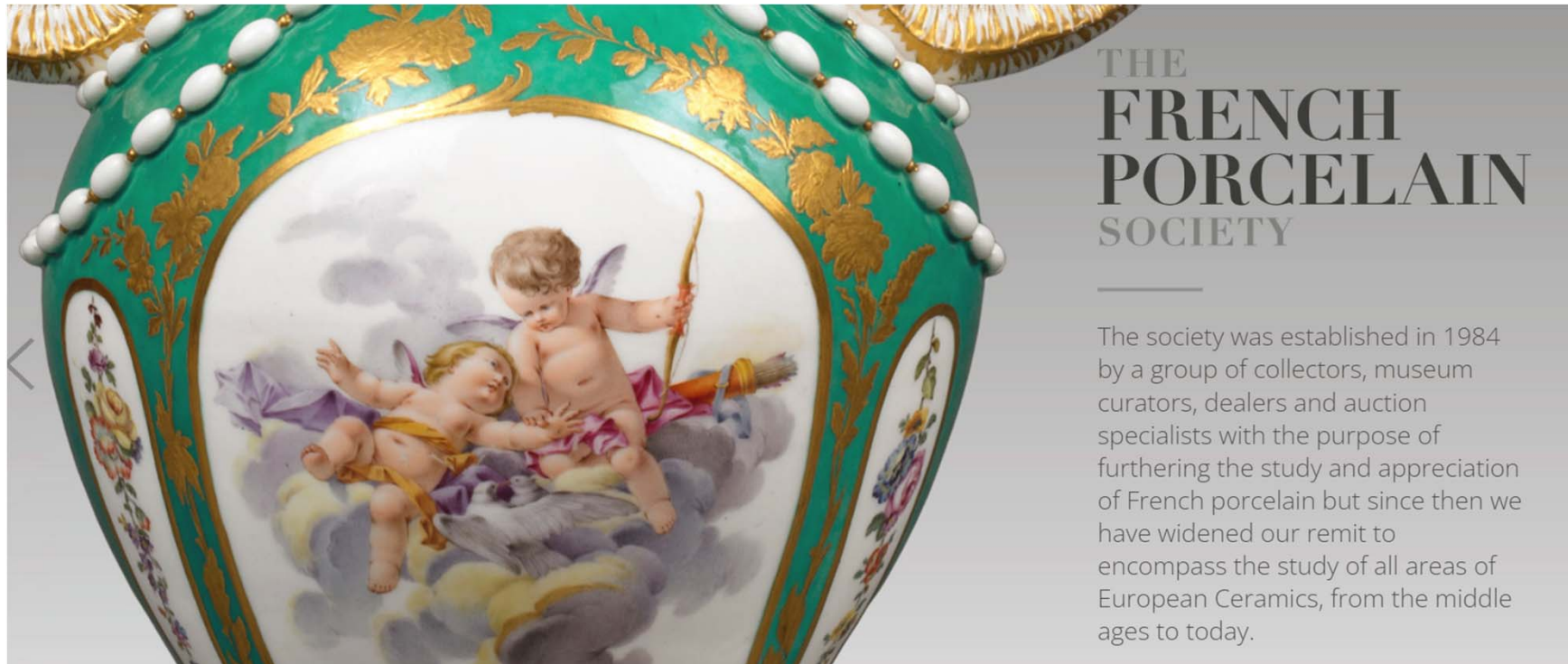
Becoming a member of the ECC, you will join an organisation where you can enhance your knowledge of ceramics. The ECC is very welcoming and helpful to members whatever their level of knowledge. At our regular meetings, seminars, visits to museum reserve collections, and members' collections, you will meet top ceramic experts. Our annual Journal, Transactions, contains the latest research and our Newsletters contain much useful information: ceramic events, etc. Lastly the online archive has a full-text search facility of the Journal going back to 1928.

The Circle offers additional levels of membership for those who wish and are able to make an additional contribution - any additional membership fees are used to support the Circle's additional activities, notably publication and research grants.

	£45
Young Order	£39
Student	£20
Life	£100
Corporate	£250
Director	£1000+

Payment is for new or renewing members to pay their subscriptions. If you are a new member, Welcome to the ECC. Our membership secretary will contact you after we receive your payment.

The French Porcelain Society, England – *Société anglaise de porcelaines françaises :* <https://www.thefrenchporcelainsociety.com/>



The French Porcelain Society, England

Histoire

• OUR HISTORY

- The French Porcelain Society was established in 1984. Its founder was Kate Foster (Lady Davson) whose shop was then a 'must' for anyone visiting or living in London with a serious interest in European porcelain of the eighteenth century. She was one of a number of dealers to exhibit regularly at Brian and Anna Haughton's International Ceramics Fair and Seminar, London, which brought together enthusiasts from around the world.
- Inspired by the collector Ulrich Fritzche of Seattle, who organised a first informal dinner, our founder's goal was to bring together collectors, museum curators, dealers, auction specialists and enthusiasts so they could enjoy each other's company, share their passion for French porcelain, and promote its study. A highlight of the Society's year has been its annual dinner and lecture. The first on 'The Identification of Plates and Services in the Sèvres Sales Registers' was given by David Peters in 1985. The annual lectures were published until 2000 and in 2003 the Society produced its first biennial Journal.
- Since the 1980s there has been an extraordinary flowering of knowledge about early French porcelain, and Sèvres in particular, in Britain, in Europe, and in the USA. A transformative event was the publication of the three-volume catalogue *The Wallace Collection: Catalogue of Sèvres Porcelain* (1988) by the Society's current President, Dame Rosalind Savill, which stands alongside the monumental *French Porcelain in the Collection of Her Majesty The Queen* (2010) by Sir Geoffrey de Bellaigue, President of the Society from 1985 to 1999. The Society has contributed to this success by encouraging many scholars to share their insights into French porcelain and its central role in the history of European ceramic art.

The French Porcelain Society, England

Mission

• OUR PASSIONS & PURSUITS

- There are two wonderful elements to the enjoyment of French porcelain. The first is the sheer joy of handling this amazingly seductive material and closely examining the ravishing originality of the modelling, painting and gilding, so that all the information available in archives, catalogues and books can be put to practical and tactile use. The other is the delight of meeting fellow members of the French Porcelain Society, from the world of museums, dealers and auction houses, collectors, students and enthusiasts, who so happily share their passion for this very rewarding subject.
- From newcomers to experts, everyone is welcome on study days, handling sessions, visits to museums and collectors, and on foreign trips, where we have fun exploring French porcelain in a sociable atmosphere among like-minded friends.

The French Porcelain Society, England

Rubriques

<https://www.thefrenchporcelainsociety.com/about-us/>



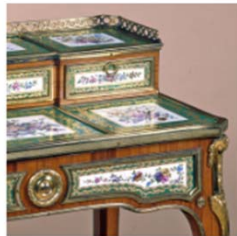
FRENCH FACTORIES



PAINTING



GROUND COLOURS



FURNITURE



EUROPEAN CERAMICS



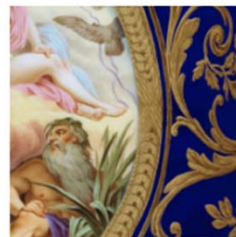
COLLECTORS



PASTE



MARKS



GILDING

The French Porcelain Society, England Activités

<https://www.thefrenchporcelainsoiety.com/news-and-events/>



NEWS

FPS JOURNAL – CALL FOR ARTICLES: Scholars, Collectors and Dealers, 1900–2024

Proposals due by 15 May 2023; completed articles due by 1 December 2023

[READ MORE](#)

EVENT

AGM, Sir Geoffrey de Bellaigue Memorial Lecture and Dinner

Friday, 23 June 2023, from 17:30
The National Liberal Club (1 Whitehall Pl, London SW1A 2HG)

[READ MORE](#)



NEWS

FPS Summer Outing: Baroque Splendour at Drayton House & Burghley

Tuesday, 27th June 2023, 8:30 am
Drayton House, Northamptonshire
Lincolnshire
£115.00 (includes coach, all entrance admissions and lunch)

[READ MORE](#)



NEWS

Visit to Exhibition 'Treasures from Faraway' at Strawberry Hill

Wednesday, 7 June 17:00–17:50
Strawberry Hill House & Garden, 268
Waldegrave Rd, Twickenham TW1 4ST

[READ MORE](#)



NEWS

FPS LIVING ROOM LECTURES

SAVE THE DATE: SUNDAY, 23 APRIL 2023,
18:00PM (BST)

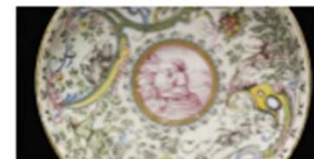
[READ MORE](#)

NEWS

FPS-FIIS SYMPOSIUM 'Rococo Across Borders: Designers and Makers'

Friday, 24 and Saturday, 25 March
10am–5pm
The Lydia and Manfred Gorvy Lecture
Victoria and Albert Museum, London
Joint Symposium with the Furniture
Society

[READ MORE](#)



NEWS

Learning to look! – HAUSMALER AT THE V&A

Thursday, 23 February, in the morning
The Victoria and Albert Museum, London

[READ MORE](#)



NEWS

FPS LIVING ROOM LECTURES

SAVE THE DATE: SUNDAY, 29 JANUARY 2023,
18:00PM (GMT)

[READ MORE](#)



EVENT

FPS visit to the World of Wedgwood and Majolica Mania in Stoke-on-Trent

Thursday, 19 January 2023
The World of Wedgwood, Beilstone
Potteries Museum and Art Gallery,
Trent

[READ MORE](#)

The French Porcelain Society, England Publications

<https://www.thefrenchporcelainsociety.com/publications/>

Journals Monographs David Peters Newsletters

PUBLICATIONS

The Society publishes on all aspects of French ceramic history and related topics with contributions from the leading scholars and curators in the field. To find out more about our biennial journal, newsletters and monographs and how to order or access these online, please see below.

Society Journals



Monographs

David Peters

Newsletters

The French Porcelain Society, England

Bourses

The Society offers a small number of bursaries each year. These are intended either:

I

To assist post-graduate students and other scholars with the costs of new research into an aspect of French ceramics.

II

To enable young professionals (for example junior to mid-career museum curators, auction specialists, dealers and academics) to take part in the Society's activities, especially study visits and seminars.

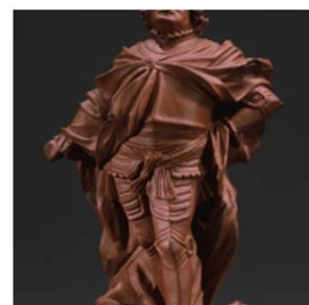
To apply, send an outline of the proposed research (where applicable), a statement of need, and a c.v. to email fpsmailing@gmail.com.

Applicants should be members of the French Porcelain Society. Please note that successful applicants will only be considered for further bursaries after a period of three years. Awards are usually less than £500.

The French Porcelain Society, England

Galerie photo

<https://www.thefrenchporcelainsociety.com/gallery/>



The French Porcelain Society, England

Cotisations

You can start, renew and pay for your membership online here.

Alternatively if you prefer you can [download our membership form](#) and return it to us by another method.

Subscription rates	Single	Joint
UK	£40	£50
35 years-old and under	£15	N/A
Overseas	£50	£60
North America	\$70*	\$80*
Institutional	£75	please contact us

Institutional membership allows more than one person in an organisation to attend FPS events.

Joint and institutional memberships will receive one copy of publications and newsletters.

* North American membership priced in USD will be automatically converted to GBP at the prevailing exchange rate. [You are also very welcome to send a cheque to Letitia Roberts directly, who takes care of the US bank account.](#)



Victoria & Albert Museum. Collections online

<https://www.vam.ac.uk/collections?type=featured>

The screenshot shows the Victoria & Albert Museum's online collections interface. At the top, the V&A logo is on the left, and navigation links for 'Visit us', 'What's on', 'Collections' (underlined), 'Learn', 'Join & Support', and 'Shop' are in the center. A search icon is on the right. Below the navigation is a search bar containing the text 'Faience Nevers' and a 'Search' button with a right-pointing arrow. Under the search bar are two filter checkboxes: 'With image' and 'On display', both of which are currently unchecked. Below the filters, it says '25 objects'. To the left of the object grid is a sidebar with a 'Hide filters' button and a list of filter categories: 'Category', 'Person', 'Organisation', 'Collection', 'Gallery', and 'Place', each followed by a plus sign. The main area displays three objects: a white plate with blue floral and landscape patterns, a blue ceramic mug with white floral designs and two handles, and a blue plate with a white floral pattern and a gold border. At the bottom of the screen is a Windows taskbar with a search bar labeled 'Rechercher', several application icons, and system tray information including '20°C Nuageux', 'FRA SF', and the time '13:07' on '07.05.2023'.

Thank you